

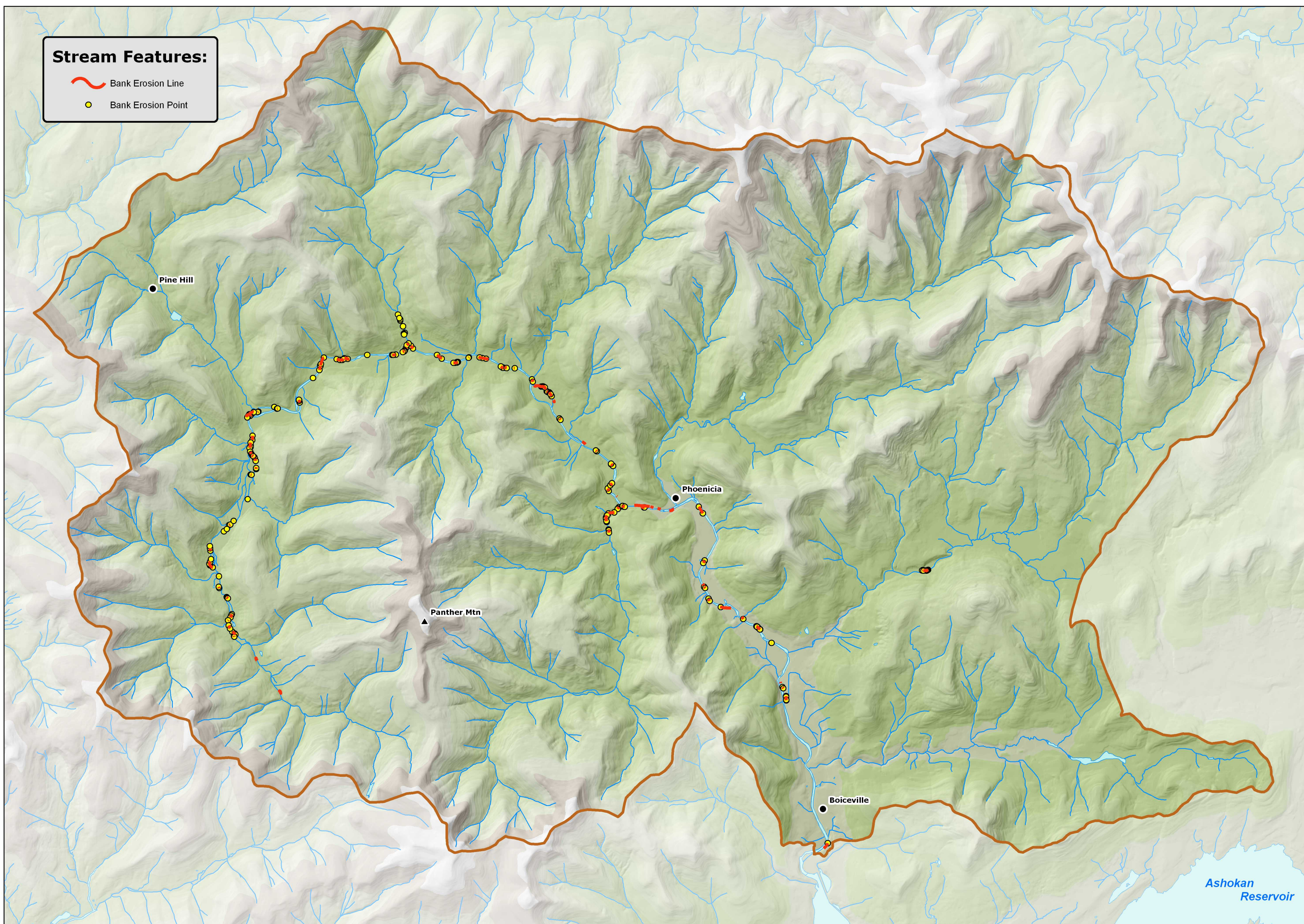


Stream Features:




-  Bank Erosion Line
-  Bank Erosion Point



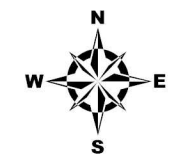
Upper Esopus Creek Management Plan
Phase 2 Geomorphic Assessment
Stream Bank Erosion - Observed in 2005

Elevation
 High (4180 ft)
 Low (285 ft)

Legend:

-  Sub-basin Boundaries
-  Streams
-  Reservoirs, Lakes, & Water Bodies

Data Source:
 1:24,000 Hydrography: digitized by NYCDEP from USGS Quads and SCS Maps, 1993
 1:24,000 Sub-basin Boundary: NYCDEP derived from USGS Topography, 1993
 10 Meter Elevation Grid: NYSDEC, 1998
 Phase 2 Data: GPS Data collected in 2005 stream reconnaissance.



 City of New York
Stream Management Program
www.nyc.gov/dep

NOTE: GIS data are approximate according to their scale and resolution. They may be subject to error and are not a substitute for on-site inspection or survey